

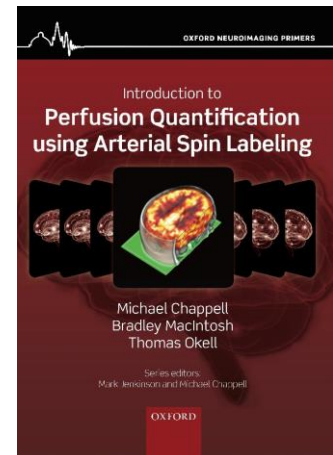
Dear Colleagues,

here is the ASL Newsletter No. 80, the last one in 2017.

In the section *featured articles* you may find your perfect Christmas gift shipped directly by Oxford University Press.

Since the year passes by quickly as always, a brief reminder to those who volunteered for a potential **proposal on a new COST Action**. There are still slots available on the doodle-schedule. Please, check your e-mails.

Kind regards and good time until Christmas,
Klaus



Recent publications November 2017, (Epub & Print)

Note: The '*new*-flag' is assigned to articles which haven't been in earlier newsletters (e.g. as e-publications). Additionally you will find titles printed in bold letters which indicates that they are listed for the first time in this particular newsletter. For articles listed multiple times in different sections the bold letters disappear in the later sections.

Content:

Animal Studies.....	2
Pharmacological / Drug Studies / Studies on the Effects of Therapies	3
Cerebral Blood Flow Studies.....	3
CBF Regional Comparison / Regional ASL.....	3
Studies on Special Disease	4
Comparison of ASL Techniques / ASL Compared with Other Imaging Methods / ASL Combined with Other Imaging Methods	6
Functional Imaging / BOLD	6
Others CBF Related.....	7
Perfusion Studies others than on Brain	7
Physiological Parameters besides CBF	8
ASL in Kidneys.....	8
ASL in Cardiovascular MRI.....	9
Non-CBF specific: Comparison of ASL Methods/ Comparison of ASL with Other	

Diagnostic Methods.....	9
ASL Data Analysis/ Comparison of ASL Evaluation Methods/ Kinetic Models/ Data Corrections/ Postprocessing	9
Technical Improvement / Parameter Optimization	10
Screening / Prognosis / Prevention.....	10
Case Reports.....	11
Cohort Studies / Gender- and Age Dependencies	11
Others	12
Review Paper / Historical Review / Guidelines	12
Job Offerings & Featured Articles.....	13

Animal Studies

new

Transit time mapping in the mouse brain using time-encoded pCASL.

Hirschler L, Munting LP, Khmelinskii A, Teeuwisse WM, Suidgeest E, Warnking JM, van der Weerd L, Barbier EL, van Osch MJP.

NMR Biomed. 2017 Nov 21. doi: 10.1002/nbm.3855. [Epub ahead of print]

new

PolyI:C model of schizophrenia in rats induces functional brain changes detected by MRI irreversible by aripiprazole treatment.

Drazanova E, Ruda-Kucerova J, Kratka L, Horska K, Demlova R, Starcuk Z Jr, Kasperek T.

Brain Res Bull. 2017 Nov 16. pii: S0361-9230(17)30582-8. doi:

10.1016/j.brainresbull.2017.11.008. [Epub ahead of print]

Altered cerebral blood flow and cerebrovascular function after voluntary exercise in adult mice.

Cahill LS, Bishop J, Gazdzinski LM, Dorr A, Stefanovic B, Sled JG.

Brain Struct Funct. 2017 Nov;222(8):3395-3405. doi: 10.1007/s00429-017-1409-z. Epub 2017 Apr 8.

Pharmacological / Drug Studies / Studies on the Effects of Therapies

new

[Brain substrates of early \(4h\) cigarette abstinence: Identification of treatment targets.](#)

Franklin TR, Jagannathan K, Hager N, Fang Z, Xu S, Wong J, Childress AR, Detre JA, Rao H, Wetherill R.

Drug Alcohol Depend. 2017 Nov 20;182:78-85. doi: 10.1016/j.drugalcdep.2017.10.010. [Epub ahead of print]

new

[PolyI:C model of schizophrenia in rats induces functional brain changes detected by MRI irreversible by aripiprazole treatment.](#)

Drazanova E, Ruda-Kucerova J, Kratka L, Horska K, Demlova R, Starcuk Z Jr, Kasperek T.

Brain Res Bull. 2017 Nov 16. pii: S0361-9230(17)30582-8. doi:

10.1016/j.brainresbull.2017.11.008. [Epub ahead of print]

[Mesocorticolimbic hemodynamic response in Parkinson's disease patients with compulsive behaviors.](#)

Claassen DO, Stark AJ, Spears CA, Petersen KJ, van Wouwe NC, Kessler RM, Zald DH, Donahue MJ.

Mov Disord. 2017 Nov;32(11):1574-1583. doi: 10.1002/mds.27047. Epub 2017 Jun 19.

[A hypo-status in drug-dependent brain revealed by multi-modal MRI.](#)

Wang Z, Suh J, Duan D, Darnley S, Jing Y, Zhang J, O'Brien C, Childress AR.

Addict Biol. 2017 Nov;22(6):1622-1631. doi: 10.1111/adb.12459. Epub 2016 Sep 22.

Cerebral Blood Flow Studies

CBF Regional Comparison / Regional ASL

new

[Brain substrates of early \(4h\) cigarette abstinence: Identification of treatment targets.](#)

Franklin TR, Jagannathan K, Hager N, Fang Z, Xu S, Wong J, Childress AR, Detre JA, Rao H, Wetherill R.

Drug Alcohol Depend. 2017 Nov 20;182:78-85. doi: 10.1016/j.drugalcdep.2017.10.010. [Epub ahead of print]

new

[Lower cardiac index levels relate to lower cerebral blood flow in older adults.](#)

Jefferson AL, Liu D, Gupta DK, Pechman KR, Watchmaker JM, Gordon EA, Rane S, Bell SP, Mendes LA, Davis LT, Gifford KA, Hohman TJ, Wang TJ, Donahue MJ.

Neurology. 2017 Nov 8. pii: 10.1212/WNL.0000000000004707. doi:

10.1212/WNL.0000000000004707. [Epub ahead of print]

new

Steady State vs. Pulsatile Blood Pressure Component and Regional Cerebral Perfusion.

Laosiripisan J, Haley AP, Tanaka H.

Am J Hypertens. 2017 Nov 1;30(11):1100-1105. doi: 10.1093/ajh/hpx108.

new

Arterial Spin-Labeling Perfusion MR Imaging Demonstrates Regional CBF Decrease in Idiopathic Normal Pressure Hydrocephalus.

Virhammar J, Laurell K, Ahlgren A, Larsson EM.

AJNR Am J Neuroradiol. 2017 Nov;38(11):2081-2088. doi: 10.3174/ajnr.A5347. Epub 2017 Aug 31.

Studies on Special Disease

new

Prefrontal recruitment mitigates risk taking behavior in HIV infected young adults.

Smith RX, Guha A, Vaida F, Paul RH, Ances B.

Clin Infect Dis. 2017 Nov 21. doi: 10.1093/cid/cix1031. [Epub ahead of print]

new

Basal ganglia cerebral blood flow associates with psychomotor speed in adults with type 1 diabetes.

Ryan JP, Aizenstein HJ, Orchard TJ, Nunley KA, Karim H, Rosano C.

Brain Imaging Behav. 2017 Nov 21. doi: 10.1007/s11682-017-9783-y. [Epub ahead of print]

new

Anterior-posterior gradient differences in lobar and cingulate cortex cerebral blood flow in late-life depression.

Abi Zeid Daou M, Boyd BD, Donahue MJ, Albert K, Taylor WD.

J Psychiatr Res. 2017 Nov 11;97:1-7. doi: 10.1016/j.jpsychires.2017.11.005. [Epub ahead of print]

new

Can Arterial Spin-Labeling with Multiple Postlabeling Delays Predict Cerebrovascular Reserve?

Choi HJ, Sohn CH, You SH, Yoo RE, Kang KM, Yun TJ, Choi SH, Kim JH, Cho WS, Kim JE.

AJNR Am J Neuroradiol. 2017 Nov 16. doi: 10.3174/ajnr.A5439. [Epub ahead of print]

new

Temporal gradient during famous face naming is associated with lower cerebral blood flow and gray matter volume in aging.

Hays CC, Zlatar ZZ, Campbell L, Meloy MJ, Wierenga CE.

Neuropsychologia. 2017 Dec;107:76-83. doi: 10.1016/j.neuropsychologia.2017.11.011. Epub 2017 Nov 10.

new

Skull metastases detecting on arterial spin labeling perfusion: Three case reports and review of literature.

Ryu KH, Baek HJ, Cho SB, Moon JI, Choi BH, Park SE, An HJ.
Medicine (Baltimore). 2017 Nov;96(44):e8432. doi: 10.1097/MD.00000000000008432. Review.

new

Seizure onset zone localization using postictal hypoperfusion detected by arterial spin labelling MRI.

Gaxiola-Valdez I, Singh S, Perera T, Sandy S, Li E, Federico P.
Brain. 2017 Nov 1;140(11):2895-2911. doi: 10.1093/brain/awx241

Added Value of Arterial Spin-Labeling MR Imaging for the Differentiation of Cerebellar Hemangioblastoma from Metastasis.

Kang KM, Sohn CH, You SH, Nam JG, Choi SH, Yun TJ, Yoo RE, Kim JH.
AJNR Am J Neuroradiol. 2017 Nov;38(11):2052-2058. doi: 10.3174/ajnr.A5363. Epub 2017 Sep 14.

Grading and outcome prediction of pediatric diffuse astrocytic tumors with diffusion and arterial spin labeling perfusion MRI in comparison with 18F-DOPA PET.

Morana G, Piccardo A, Tortora D, Puntoni M, Severino M, Nozza P, Ravegnani M, Consales A, Mascelli S, Raso A, Cabria M, Verrico A, Milanaccio C, Rossi A.
Eur J Nucl Med Mol Imaging. 2017 Nov;44(12):2084-2093. doi: 10.1007/s00259-017-3777-2. Epub 2017 Jul 27.

Arterial Spin-Labeled MR Imaging Detecting Biphasic Neurovascular Changes in Migraine With Persistent Aura.

Burns R, De Malherbe M, Chadenat ML, Pico F, Buch D.
Headache. 2017 Nov;57(10):1627-1628. doi: 10.1111/head.13119. Epub 2017 May 19. No abstract available.

Multiparametric estimation of brain hemodynamics with MR fingerprinting ASL.

Su P, Mao D, Liu P, Li Y, Pinho MC, Welch BG, Lu H.
Magn Reson Med. 2017 Nov;78(5):1812-1823. doi: 10.1002/mrm.26587. Epub 2016 Dec 26.

A hypo-status in drug-dependent brain revealed by multi-modal MRI.

Wang Z, Suh J, Duan D, Darnley S, Jing Y, Zhang J, O'Brien C, Childress AR.
Addict Biol. 2017 Nov;22(6):1622-1631. doi: 10.1111/adb.12459. Epub 2016 Sep 22.

Comparison of ASL Techniques / ASL Compared with Other Imaging Methods / ASL Combined with Other Imaging Methods

new

[Bacterial lipopolysaccharide-induced systemic inflammation alters perfusion of white matter-rich regions without altering flow in brain-irrigating arteries: Relationship to blood-brain barrier breakdown?](#)

Dhaya I, Griton M, Raffard G, Amri M, Hiba B, Konsman JP.
J Neuroimmunol. 2017 Nov 20. pii: S0165-5728(17)30456-3. doi:
10.1016/j.jneuroim.2017.11.009. [Epub ahead of print]

new

[Can Arterial Spin-Labeling with Multiple Postlabeling Delays Predict Cerebrovascular Reserve?](#)

Choi HJ, Sohn CH, You SH, Yoo RE, Kang KM, Yun TJ, Choi SH, Kim JH, Cho WS, Kim JE.
AJNR Am J Neuroradiol. 2017 Nov 16. doi: 10.3174/ajnr.A5439. [Epub ahead of print]

new

[Arterial Spin-Labeling Perfusion MR Imaging Demonstrates Regional CBF Decrease in Idiopathic Normal Pressure Hydrocephalus.](#)

Virhammar J, Laurell K, Ahlgren A, Larsson EM.
AJNR Am J Neuroradiol. 2017 Nov;38(11):2081-2088. doi: 10.3174/ajnr.A5347. Epub 2017 Aug 31.

[Grading and outcome prediction of pediatric diffuse astrocytic tumors with diffusion and arterial spin labeling perfusion MRI in comparison with 18F-DOPA PET.](#)

Morana G, Piccardo A, Tortora D, Puntoni M, Severino M, Nozza P, Ravegnani M, Consales A, Mascelli S, Raso A, Cabria M, Verrico A, Milanaccio C, Rossi A.
Eur J Nucl Med Mol Imaging. 2017 Nov;44(12):2084-2093. doi: 10.1007/s00259-017-3777-2. Epub 2017 Jul 27.

Functional Imaging / BOLD

new

[Prefrontal recruitment mitigates risk taking behavior in HIV infected young adults.](#)

Smith RX, Guha A, Vaida F, Paul RH, Ances B.
Clin Infect Dis. 2017 Nov 21. doi: 10.1093/cid/cix1031. [Epub ahead of print]

new

[Temporal gradient during famous face naming is associated with lower cerebral blood flow and gray matter volume in aging.](#)

Hays CC, Zlatar ZZ, Campbell L, Meloy MJ, Wierenga CE.
Neuropsychologia. 2017 Dec;107:76-83. doi: 10.1016/j.neuropsychologia.2017.11.011. Epub 2017 Nov 10.

Resisting Sleep Pressure: Impact on Resting State Functional Network Connectivity.

Tüshaus L, Balsters JH, Schläpfer A, Brandeis D, O'Gorman Tuura R, Achermann P.
Brain Topogr. 2017 Nov;30(6):757-773. doi: 10.1007/s10548-017-0575-x. Epub 2017 Jul 15.

Others CBF Related

new

Bacterial lipopolysaccharide-induced systemic inflammation alters perfusion of white matter-rich regions without altering flow in brain-irrigating arteries: Relationship to blood-brain barrier breakdown?

Dhaya I, Griton M, Raffard G, Amri M, Hiba B, Konsman JP.
J Neuroimmunol. 2017 Nov 20. pii: S0165-5728(17)30456-3. doi:
10.1016/j.jneuroim.2017.11.009. [Epub ahead of print]

new

Lower cardiac index levels relate to lower cerebral blood flow in older adults.

Jefferson AL, Liu D, Gupta DK, Pechman KR, Watchmaker JM, Gordon EA, Rane S, Bell SP, Mendes LA, Davis LT, Gifford KA, Hohman TJ, Wang TJ, Donahue MJ.
Neurology. 2017 Nov 8. pii: 10.1212/WNL.0000000000004707. doi:
10.1212/WNL.0000000000004707. [Epub ahead of print]

new

Steady State vs. Pulsatile Blood Pressure Component and Regional Cerebral Perfusion.

Laosiripisan J, Haley AP, Tanaka H.
Am J Hypertens. 2017 Nov 1;30(11):1100-1105. doi: 10.1093/ajh/hpx108.

Perfusion Studies others than on Brain

new

Non-Invasive Placental Perfusion Imaging in Pregnancies Complicated by Fetal Heart Disease Using Velocity-Selective Arterial Spin Labeled MRI.

Zun Z, Zaharchuk G, Andescavage NN, Donofrio MT, Limperopoulos C.
Sci Rep. 2017 Nov 23;7(1):16126. doi: 10.1038/s41598-017-16461-8.

[Free Article](#)

new

Measuring human placental blood flow with multidelay 3D GRASE pseudocontinuous arterial spin labeling at 3T.

Shao X, Liu D, Martin T, Chanlaw T, Devaskar SU, Janzen C, Murphy AM, Margolis D, Sung K, Wang DJJ.
J Magn Reson Imaging. 2017 Nov 14. doi: 10.1002/jmri.25893. [Epub ahead of print]

Physiological Parameters besides CBF

new

[Transit time mapping in the mouse brain using time-encoded pCASL.](#)

Hirschler L, Munting LP, Khmelinskii A, Teeuwisse WM, Suidgeest E, Warnking JM, van der Weerd L, Barbier EL, van Osch MJP.

NMR Biomed. 2017 Nov 21. doi: 10.1002/nbm.3855. [Epub ahead of print]

new

[The Brain Thermal Response as a Potential Neuroimaging Biomarker of Cerebrovascular Impairment.](#)

Fleischer CC, Wu J, Qiu D, Park SE, Nahab F, Dehkharghani S.

AJNR Am J Neuroradiol. 2017 Nov;38(11):2044-2051. doi: 10.3174/ajnr.A5380. Epub 2017 Sep 21.

ASL for Angiography

[Fast acceleration of ASL-based time-resolved magnetic resonance angiography by acquisition of control and labeled images in the same shot \(fast ACTRESS\): An optimization study.](#)

Sugimori H, Fujima N, Suzuki Y, Hamaguchi H, Ishizaka K, Kudo K.

Magn Reson Imaging. 2017 Nov;43:136-143. doi: 10.1016/j.mri.2017.07.026. Epub 2017 Jul 25.

[Noncontrast Hybrid Arterial Spin-Labeled Imaging of the Intracranial Arteries.](#)

Lim RP, Trajcevska E, Al Rawi F, Gooneratne D, Ang W, Perchyonok Y, Fitt G, Kemp A, Giri S, Piccini D, Brodtmann A, Dewey H, Koktzoglou I.

J Comput Assist Tomogr. 2017 Nov/Dec;41(6):854-860. doi: 10.1097/RCT.0000000000000633

ASL in Kidneys

new

[Usability of Functional MRI in Clinical Studies for Fast and Reliable Assessment of Renal Perfusion and Quantification of Hemodynamic Effects on the Kidney.](#)

Getzin T, May M, Schmidbauer M, Gutberlet M, Martirosian P, Oertel R, Wacker F, Schindler C, Hueper K.

J Clin Pharmacol. 2017 Nov 10. doi: 10.1002/jcph.1034. [Epub ahead of print]

new

[Arterial spin labelling MRI for detecting pseudocapsule defects and predicting renal capsule invasion in renal cell carcinoma.](#)

Zhang H, Wu Y, Xue W, Zuo P, Oesingmann N, Gan Q, Huang Z, Wu M, Hu F, Kuang M, Song B.

Clin Radiol. 2017 Nov;72(11):936-943. doi: 10.1016/j.crad.2017.06.003. Epub 2017 Jun 30.

ASL in Cardiovascular MRI

new

[Demonstration of velocity selective myocardial arterial spin labeling perfusion imaging in humans.](#)

Jao TR, Nayak KS.

Magn Reson Med. 2017 Nov 6. doi: 10.1002/mrm.26994. [Epub ahead of print]

Non-CBF specific: Comparison of ASL Methods/ Comparison of ASL with Other Diagnostic Methods

[Noncontrast Hybrid Arterial Spin-Labeled Imaging of the Intracranial Arteries.](#)

Lim RP, Trajcevska E, Al Rawi F, Gooneratne D, Ang W, Perchyonok Y, Fitt G, Kemp A, Giri S, Piccini D, Brodtmann A, Dewey H, Koktzoglou I.

J Comput Assist Tomogr. 2017 Nov/Dec;41(6):854-860. doi: 10.1097/RCT.0000000000000633

ASL Data Analysis/ Comparison of ASL Evaluation Methods/ Kinetic Models/ Data Corrections/ Postprocessing

new

[Patch-based local learning method for cerebral blood flow quantification with arterial spin-labeling MRI.](#)

Zhu H, He G, Wang Z.

Med Biol Eng Comput. 2017 Nov 6. doi: 10.1007/s11517-017-1735-6. [Epub ahead of print]

[A systematic study of the sensitivity of partial volume correction methods for the quantification of perfusion from pseudo-continuous arterial spin labeling MRI.](#)

Zhao MY, Mezue M, Segerdahl AR, Okell TW, Tracey I, Xiao Y, Chappell MA.

Neuroimage. 2017 Nov 15;162:384-397. doi: 10.1016/j.neuroimage.2017.08.072. Epub 2017 Sep 5.

Technical Improvement / Parameter Optimization

new

[Transit time mapping in the mouse brain using time-encoded pCASL.](#)

Hirschler L, Munting LP, Khmelinskii A, Teeuwisse WM, Suidgeest E, Warnking JM, van der Weerd L, Barbier EL, van Osch MJP.

NMR Biomed. 2017 Nov 21. doi: 10.1002/nbm.3855. [Epub ahead of print]

new

[Measuring human placental blood flow with multidelay 3D GRASE pseudocontinuous arterial spin labeling at 3T.](#)

Shao X, Liu D, Martin T, Chanlaw T, Devaskar SU, Janzen C, Murphy AM, Margolis D, Sung K, Wang DJJ.

J Magn Reson Imaging. 2017 Nov 14. doi: 10.1002/jmri.25893. [Epub ahead of print]

new

[Demonstration of velocity selective myocardial arterial spin labeling perfusion imaging in humans.](#)

Jao TR, Nayak KS.

Magn Reson Med. 2017 Nov 6. doi: 10.1002/mrm.26994. [Epub ahead of print]

[Fast acceleration of ASL-based time-resolved magnetic resonance angiography by acquisition of control and labeled images in the same shot \(fast ACTRESS\): An optimization study.](#)

Sugimori H, Fujima N, Suzuki Y, Hamaguchi H, Ishizaka K, Kudo K.

Magn Reson Imaging. 2017 Nov;43:136-143. doi: 10.1016/j.mri.2017.07.026. Epub 2017 Jul 25.

[Multiparametric estimation of brain hemodynamics with MR fingerprinting ASL.](#)

Su P, Mao D, Liu P, Li Y, Pinho MC, Welch BG, Lu H.

Magn Reson Med. 2017 Nov;78(5):1812-1823. doi: 10.1002/mrm.26587. Epub 2016 Dec 26.

Screening / Prognosis / Prevention

new

[Non-Invasive Placental Perfusion Imaging in Pregnancies Complicated by Fetal Heart Disease Using Velocity-Selective Arterial Spin Labeled MRI.](#)

Zun Z, Zaharchuk G, Andescavage NN, Donofrio MT, Limperopoulos C.

Sci Rep. 2017 Nov 23;7(1):16126. doi: 10.1038/s41598-017-16461-8.

[Free Article](#)

new

[Can Arterial Spin-Labeling with Multiple Postlabeling Delays Predict Cerebrovascular Reserve?](#)

Choi HJ, Sohn CH, You SH, Yoo RE, Kang KM, Yun TJ, Choi SH, Kim JH, Cho WS, Kim JE.

AJNR Am J Neuroradiol. 2017 Nov 16. doi: 10.3174/ajnr.A5439. [Epub ahead of print]

[Transient Focal Neurologic Symptoms Correspond to Regional Cerebral Hypoperfusion by MRI: A Stroke Mimic in Children.](#)

Lehman LL, Danehy AR, Trenor CC 3rd, Calahan CF, Bernson-Leung ME, Robertson RL, Rivkin MJ.

AJNR Am J Neuroradiol. 2017 Nov;38(11):2199-2202. doi: 10.3174/ajnr.A5296. Epub 2017 Jul 13.

Case Reports

new

[Skull metastases detecting on arterial spin labeling perfusion: Three case reports and review of literature.](#)

Ryu KH, Baek HJ, Cho SB, Moon JI, Choi BH, Park SE, An HJ.

Medicine (Baltimore). 2017 Nov;96(44):e8432. doi: 10.1097/MD.0000000000008432. Review.

Cohort Studies / Gender- and Age Dependencies

new

[Anterior-posterior gradient differences in lobar and cingulate cortex cerebral blood flow in late-life depression.](#)

Abi Zeid Daou M, Boyd BD, Donahue MJ, Albert K, Taylor WD.

J Psychiatr Res. 2017 Nov 11;97:1-7. doi: 10.1016/j.jpsychires.2017.11.005. [Epub ahead of print]

new

[Lower cardiac index levels relate to lower cerebral blood flow in older adults.](#)

Jefferson AL, Liu D, Gupta DK, Pechman KR, Watchmaker JM, Gordon EA, Rane S, Bell SP, Mendes LA, Davis LT, Gifford KA, Hohman TJ, Wang TJ, Donahue MJ.

Neurology. 2017 Nov 8. pii: 10.1212/WNL.0000000000004707. doi: 10.1212/WNL.0000000000004707. [Epub ahead of print]

[Grading and outcome prediction of pediatric diffuse astrocytic tumors with diffusion and arterial spin labeling perfusion MRI in comparison with 18F-DOPA PET.](#)

Morana G, Piccardo A, Tortora D, Puntoni M, Severino M, Nozza P, Ravegnani M, Consales A, Mascelli S, Raso A, Cabria M, Verrico A, Milanaccio C, Rossi A.

Eur J Nucl Med Mol Imaging. 2017 Nov;44(12):2084-2093. doi: 10.1007/s00259-017-3777-2. Epub 2017 Jul 27.

[Transient Focal Neurologic Symptoms Correspond to Regional Cerebral Hypoperfusion by MRI: A Stroke Mimic in Children.](#)

Lehman LL, Danehy AR, Trenor CC 3rd, Calahan CF, Bernson-Leung ME, Robertson RL, Rivkin MJ.

AJNR Am J Neuroradiol. 2017 Nov;38(11):2199-2202. doi: 10.3174/ajnr.A5296. Epub 2017 Jul 13.

Others

new

[The Brain Thermal Response as a Potential Neuroimaging Biomarker of Cerebrovascular Impairment.](#)

Fleischer CC, Wu J, Qiu D, Park SE, Nahab F, Dehkharghani S.

AJNR Am J Neuroradiol. 2017 Nov;38(11):2044-2051. doi: 10.3174/ajnr.A5380. Epub 2017 Sep 21.

[Altered cerebral blood flow and cerebrovascular function after voluntary exercise in adult mice.](#)

Cahill LS, Bishop J, Gazdzinski LM, Dorr A, Stefanovic B, Sled JG.

Brain Struct Funct. 2017 Nov;222(8):3395-3405. doi: 10.1007/s00429-017-1409-z. Epub 2017 Apr 8.

Review Paper / Historical Review / Guidelines

new

[Neural Basis of Exertional Fatigue in the Heat: A Review of Magnetic Resonance Imaging Methods.](#)

Tan XR, Low ICC, Stephenson MC, Soong TW, Lee JKW.

Scand J Med Sci Sports. 2017 Nov 14. doi: 10.1111/sms.13015. [Epub ahead of print] Review.

new

[Skull metastases detecting on arterial spin labeling perfusion: Three case reports and review of literature.](#)

Ryu KH, Baik HJ, Cho SB, Moon JI, Choi BH, Park SE, An HJ.

Medicine (Baltimore). 2017 Nov;96(44):e8432. doi: 10.1097/MD.00000000000008432. Review.

Job Offerings & Featured Articles

- If you have any vacancies please send them to jobsATasl-network.org
-

Post-doc position in image analysis at NIMTLAB, Geneva/CH, Application until 31st Jan.
https://jobs.unige.ch/www/wd_portal.show_job?p_web_site_id=1&p_web_page_id=30622

- If you would like to write a comment on an interesting article mail it to editorATasl-network.org
-

New book on ASL analysis:

Introduction to Perfusion Quantification using Arterial Spin Labelling, <http://bit.ly/2xN0CP9>

The aim of this primer is to equip someone new to the field of perfusion imaging and ASL with the knowledge not only to make good choices about ASL acquisition and analysis, but also to understand what choices they are making and why. Examples of analysis applied to real data are given throughout the text and instructions on how to reproduce the analyses are illustrated on the primer website (www.neuorimagingprimers.org). Written to provide a stand-alone introduction to perfusion qualification using ASL, this primer also works with other texts in the Oxford Neuroimaging Primers series to provide a comprehensive overview of the increasingly influential field of neuroimaging.

- Michael Chappell -

